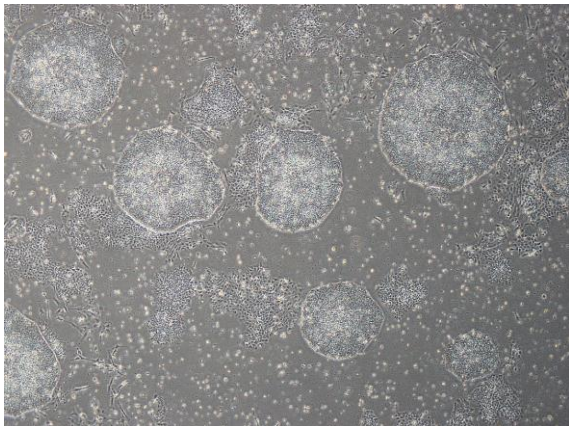
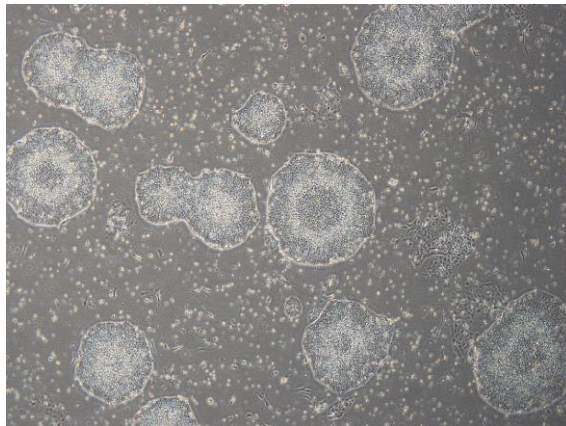


## 【 CiRA-j-1218 】 Morphology of iPSC colonies

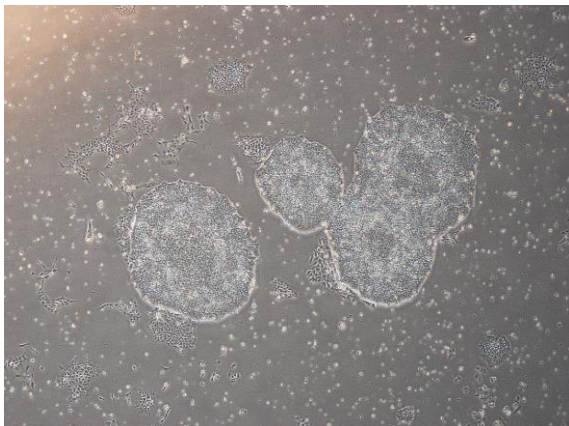
CiRA-j-1218-A: passage-2



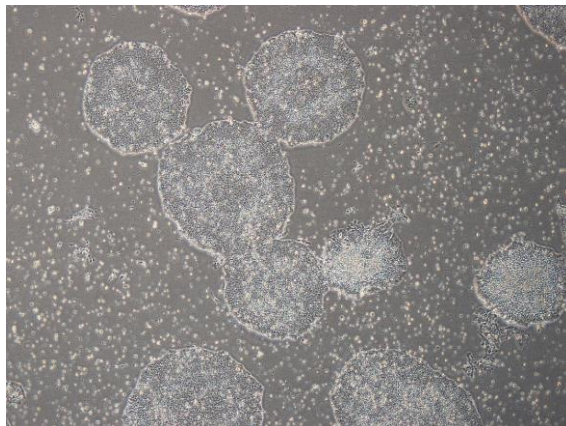
CiRA-j-1218-B: passage-2



CiRA-j-1218-C: passage-3



CiRA-j-1218-D: passage-3



CiRA-j-1218-E: passage-3



( All images were captured at 4x magnification )